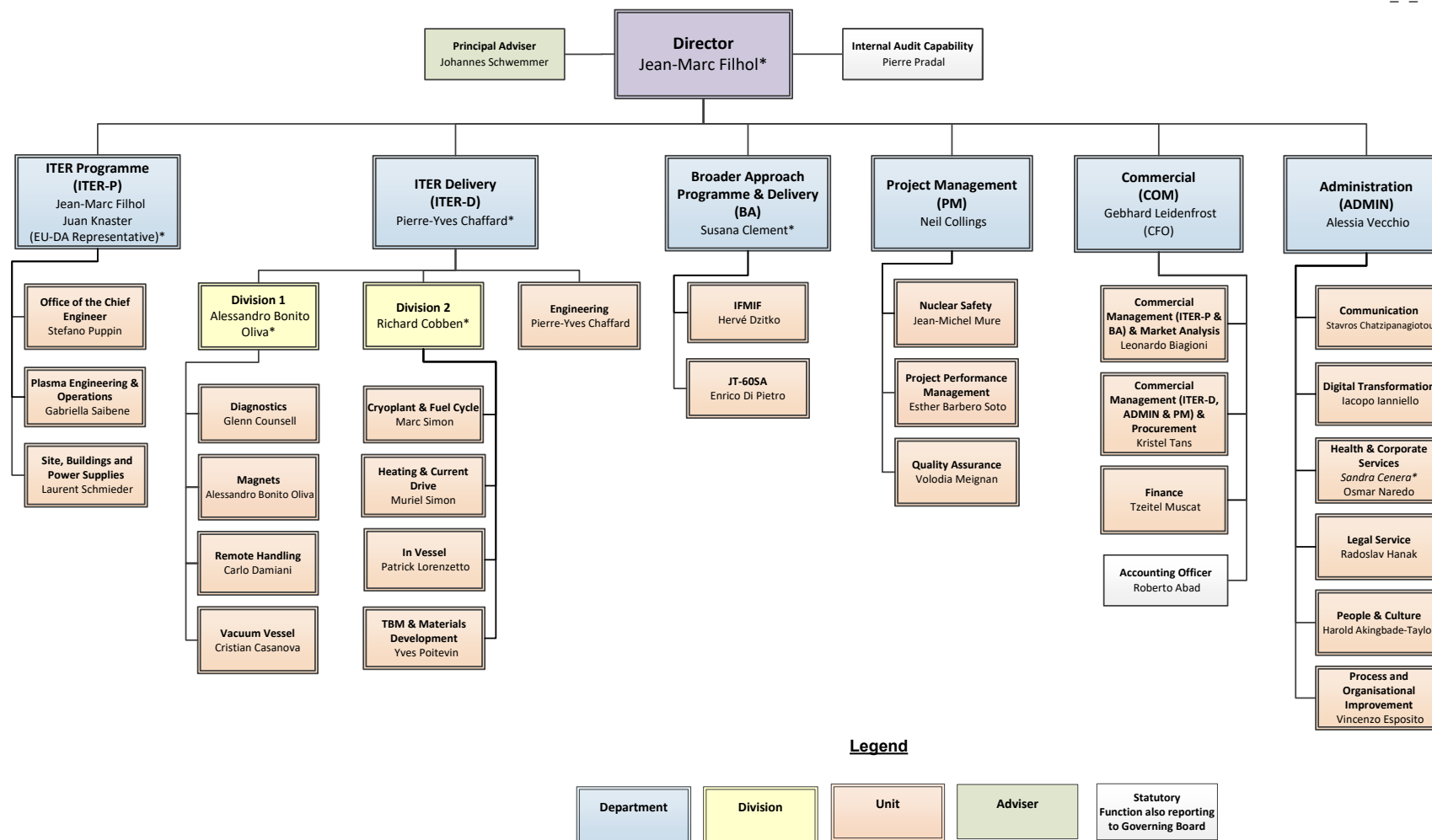


Organisational Chart

Effective from 16 October 2022

IDM Ref. F4E_D_2PCCXS



* Acting

Note: This chart is compliant with the basic organisational structure approved by the Governing Board on 1 October 2016 (IDM Ref.: F4E_D_25W6Y7) and shows management functions in the meaning of the Implementing Rule on Middle Management Staff adopted on by the Administration and Management Committee on 13 June 2018 (IDM Ref. F4E_D_2CB4K5) as well as statutory functions that report to the Governing Board