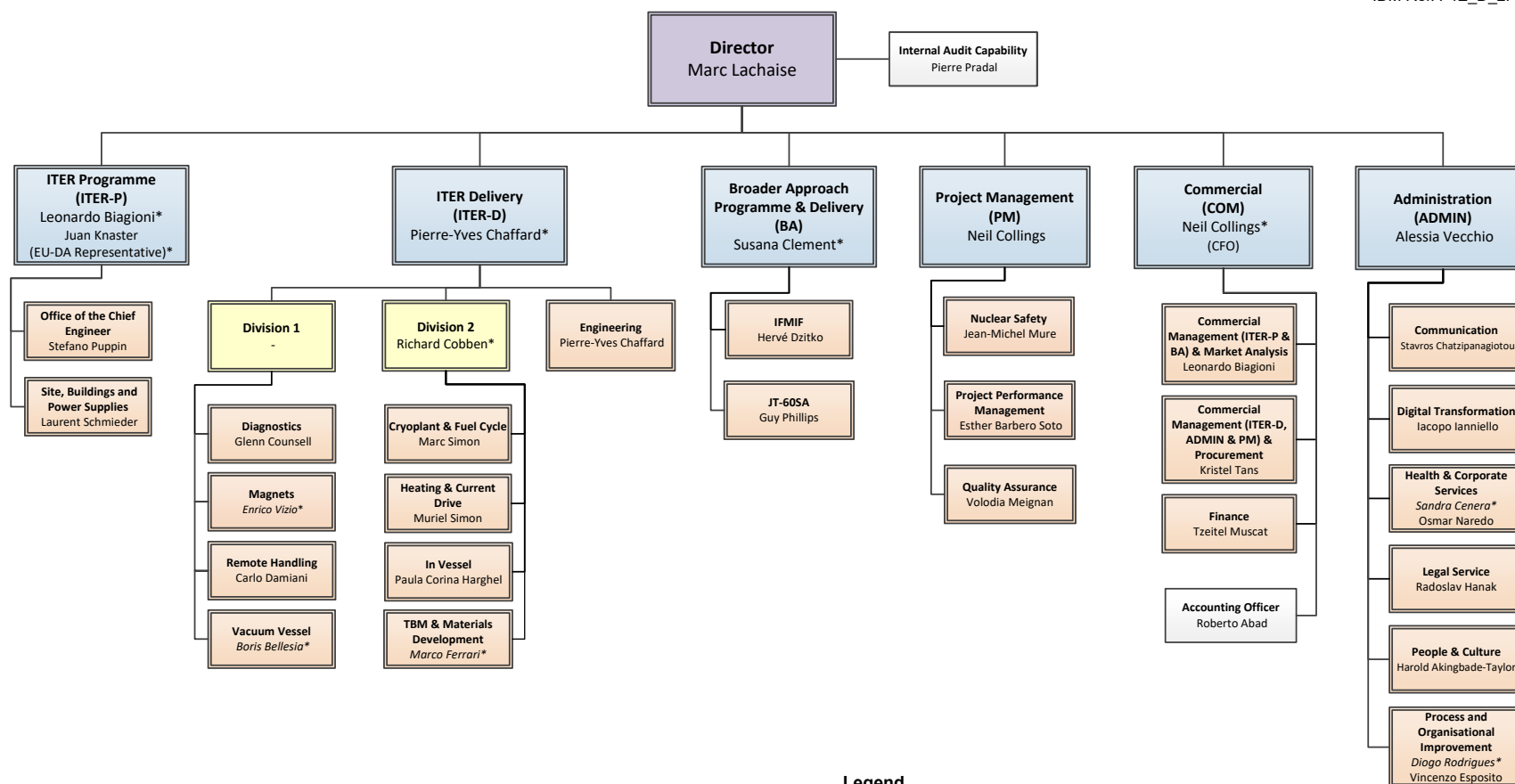


# Organisational Chart

Effective from 1 November 2023

IDM Ref. F4E\_D\_2PCCXS



## Legend



\* Acting

Note: This chart is compliant with the basic organisational structure approved by the Governing Board on 1 October 2016 (IDM Ref.: F4E\_D\_25W6Y7) and shows management functions in the meaning of the Implementing Rule on Middle Management Staff adopted by the Administration and Management Committee on 13 June 2018 (IDM Ref. F4E\_D\_2CB4K5) as well as statutory functions that report to the Governing Board